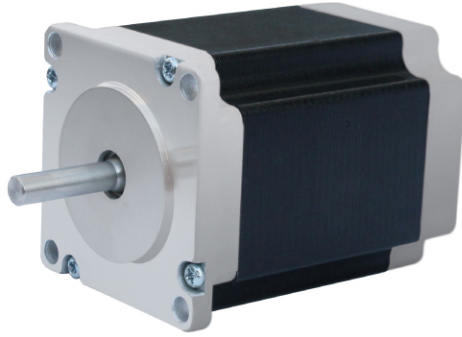


57BHH 步进电机

NAME 23BHH (inch) Series two-phase (four-phase)
stepper motor



57BHH系列步进电机参数列表 NAME 23BHH(inch)series step-motor parameter list

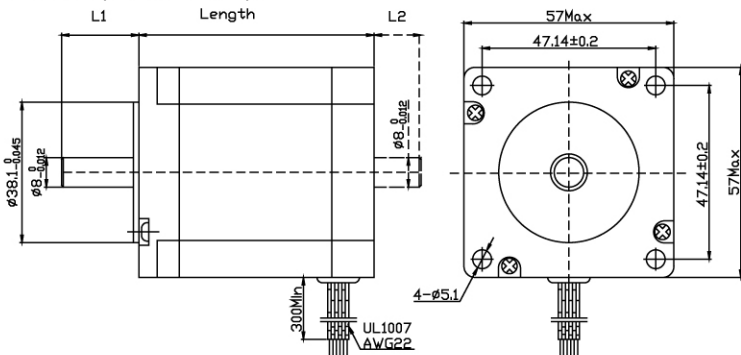
| 项 Item | 步距角 Step Angle | 步距角精度 Step Angle Accuracy | 电阻精度 Resistance Accuracy | 电感精度 Inductance Accuracy | 温 升 Temperature Rise | 环境温度 Ambient Temperature | 绝缘电阻 Insulation Resistance | 介质强度 Dielectric Strength | 径向跳动 Shaft Radial Play | 轴向间隙 Shaft Axial Play |
|-----------------------------|-------------------|---------------------------------|--------------------------------|--------------------------------|----------------------------|--------------------------------|----------------------------------|--------------------------------|------------------------------|-----------------------------|
| 规范 pecifications | 1.8° | ±5% | ±10% | ±20% | 80℃ Max. | -20℃~+50℃ | 100MΩ Min., 500VDC | 500VAC for one minute | 0.02Max. (450 g-load) | 0.08Max. (450 g-load) |

| 新型号 New Model | 老型号 Old Model | 相数 No. of Phase | 电压 Voltage | 电流 Current | 电感 Inductance | 电阻 Resistance | 最大静转矩 Holding Troque | 转动惯量 Rotor Inertia | 重量 Weight | 机身长度 Length | 接线 Lead Wire Number |
|------------------|------------------|--------------------|---------------|---------------|------------------|------------------|-------------------------|-----------------------|--------------|----------------|------------------------|
| | | | V | A | mh±20% | Ω±10% | kg.cm | g.cm ² | kg | mm | NO. |
| 57BHH41-030B | 57BYGH019 | 4 | 9 | 0.3 | 30 | 30 | 3 | 135 | 0.42 | 41 | 6 |
| 57BHH41-060A | 57BYGH021 | 2 | 10 | 0.6 | 16 | 16.5 | 1.2 | 135 | 0.42 | 41 | 4 |
| 57BHH41-100A | 57BYGH012-02 | 2 | 5.4 | 1 | 9.5 | 5.4 | 5.5 | 135 | 0.42 | 41 | 4 |
| 57BHH41-100B | 57BYGH001 | 4 | 5 | 1 | 5 | 5 | 3.8 | 135 | 0.42 | 41 | 6 |
| 57BHH41-150A | 57BYGH004-02 | 2 | 2.7 | 1.5 | 3.3 | 1.8 | 5 | 135 | 0.42 | 41 | 4 |
| 57BHH41-150C | 57BYGH013 | 4 | 3 | 1.5 | 2.2 | 2 | 4.2 | 135 | 0.42 | 41 | 8 |
| 57BHH41-200A | 57BYGH032-02 | 2 | 2 | 2 | 2.2 | 1 | 5.2 | 135 | 0.42 | 41 | 4 |
| 57BHH41-200B | 57BYGH008 | 4 | 2.8 | 2 | 1.2 | 1.4 | 4 | 135 | 0.42 | 41 | 6 |
| 57BHH41-300A | 57BYGH010-02 | 2 | 1.8 | 3 | 0.8 | 0.6 | 5.5 | 135 | 0.42 | 41 | 4 |
| 57BHH50-060A | 57BYGH101 | 2 | 7.2 | 0.6 | 32 | 12 | 9.6 | 170 | 0.6 | 50 | 4 |
| 57BHH50-080B | 57BYGH109 | 4 | 2.5 | 0.8 | 8 | 15 | 6.2 | 170 | 0.6 | 50 | 6 |
| 57BHH50-160B | 57BYGH117 | 4 | 4.2 | 1.6 | 5 | 2.6 | 9 | 170 | 0.6 | 50 | 6 |
| 57BHH50-200A | 57BYGH121 | 2 | 2.4 | 2 | 2.6 | 1.2 | 9 | 170 | 0.6 | 50 | 4 |
| 57BHH50-200B | 57BYGH104 | 4 | 2.5 | 2 | 1.4 | 1.2 | 7 | 170 | 0.6 | 50 | 6 |
| 57BHH50-250C | 57BYGH130-51 | 4 | 2.25 | 2.5 | 1.5 | 0.9 | 6 | 170 | 0.6 | 50 | 8 |
| 57BHH50-300A | 57BYGH102 | 2 | 2.4 | 3 | 2.4 | 0.8 | 7.2 | 170 | 0.6 | 50 | 4 |
| 57BHH54-060B | 57BYGH219 | 2 | 13.8 | 0.6 | 32 | 20 | 9 | 260 | 0.65 | 54 | 4 |
| 57BHH54-100A | 57BYGH212 | 2 | 3.5 | 1 | 12.5 | 3.5 | 9 | 260 | 0.65 | 54 | 4 |
| 57BHH54-100B | 57BYGH213 | 4 | 6.2 | 1 | 10 | 6.2 | 9 | 260 | 0.65 | 54 | 6 |
| 57BHH54-200A | 57BYGH201 | 2 | 2.2 | 2 | 3.6 | 1.1 | 9 | 260 | 0.65 | 54 | 4 |
| 57BHH54-200B | 57BYGH223D | 4 | 3.2 | 2 | 3.2 | 1.6 | 9 | 260 | 0.7 | 54 | 6 |
| 57BHH54-260C | 57BYGH203 | 4 | 2 | 2.6 | 1.2 | 0.75 | 7.8 | 260 | 0.7 | 54 | 8 |
| 57BHH54-300A | 57BYGH241 | 2 | 2.7 | 3 | 2.5 | 0.9 | 12 | 260 | 0.65 | 54 | 4 |
| 57BHH54-300B | 57BYGH202 | 4 | 2.25 | 3 | 1.2 | 0.75 | 9 | 260 | 0.65 | 54 | 6 |
| 57BHH56-100A | 57BYGH218D-16 | 2 | 7.5 | 1 | 15 | 7.5 | 9.8 | 260 | 0.7 | 56 | 4 |

57BHH系列步进电机参数列表 NAME 23BHH(inch)series step-motor parameter list

| 新型号 New Model | 老型号 Old Model | 相数 No. of Phase | 电压 Voltage | 电流 Current | 电感 Inductance | 电阻 Resistance | 最大静转矩 Holding Troque | 转动惯量 Rotor Inertia | 重量 Weight | 机身长度 Length | 接线 Lead Wire Number |
|------------------|------------------|--------------------|---------------|---------------|------------------|------------------|-------------------------|-----------------------|--------------|----------------|------------------------|
| | | | V | A | mh±20% | Ω±10% | kg.cm | g.cm ² | kg | mm | NO. |
| 57BHH56-100B | 57BYGH268 | 4 | 7.4 | 1 | 10 | 7.4 | 9 | 260 | 0.65 | 56 | 6 |
| 57BHH56-150A | 57BYGH221 | 2 | 4.2 | 1.5 | 8 | 2.8 | 9 | 260 | 0.65 | 56 | 4 |
| 57BHH56-200A | 57BYGH227 | 2 | 2.8 | 2 | 4.2 | 1.4 | 8.2 | 260 | 0.7 | 56 | 4 |
| 57BHH56-200B | 57BYGH220C-25 | 4 | 3.6 | 2 | 2.5 | 1.8 | 9 | 260 | 0.7 | 56 | 6 |
| 57BHH56-280B | 57BYGH267 | 4 | 3.92 | 2.8 | 2.6 | 1.4 | 12.6 | 260 | 0.7 | 56 | 8 |
| 57BHH56-300A | 57BYGH205G | 2 | 2.4 | 3 | 1.2 | 0.8 | 9 | 260 | 0.75 | 56 | 4 |
| 57BHH64-120A | 57BYGH2512 | 2 | 3.2 | 1.2 | 10 | 2.6 | 10.8 | 300 | 0.75 | 64 | 4 |
| 57BHH64-150C | 57BYGH2503 | 4 | 5.3 | 1.5 | 5.5 | 3.5 | 11.8 | 300 | 0.75 | 64 | 8 |
| 57BHH64-200A | 57BYGH2520A | 2 | 2 | 2 | 4 | 1 | 13 | 300 | 0.75 | 64 | 4 |
| 57BHH64-250B | 57BYGH2506 | 4 | 3.3 | 2.5 | 2 | 1.3 | 12 | 300 | 0.75 | 64 | 6 |
| 57BHH76-080A | 57BYGH325 | 2 | 8 | 0.8 | 45 | 10 | 16 | 460 | 1.1 | 76 | 4 |
| 57BHH76-100B | 57BYGH321 | 4 | 8.6 | 1 | 14 | 8.6 | 13.5 | 460 | 1.1 | 76 | 6 |
| 57BHH76-200A | 57BYGH310 | 2 | 8.6 | 2 | 16.2 | 4.3 | 24 | 460 | 1.1 | 76 | 4 |
| 57BHH76-200B | 57BYGH303 | 4 | 5 | 2 | 5 | 2.5 | 15 | 460 | 1.1 | 76 | 6 |
| 57BHH76-300A | 57BYGH311-01 | 2 | 3.3 | 3 | 2.3 | 1.1 | 15 | 460 | 1.1 | 76 | 4 |
| 57BHH76-300B | 57BYGH302 | 4 | 3 | 3 | 2.1 | 1 | 13.5 | 460 | 1.1 | 76 | 6 |
| 57BHH76-400A | 57BYGH331B | 2 | 2.1 | 4 | 2 | 0.52 | 20 | 460 | 1.1 | 76 | 4 |
| 57BHH82-100A | 57BYGH401C-10 | 2 | 10 | 1 | 44 | 10 | 22 | 520 | 1.3 | 82 | 4 |
| 57BHH82-150C | 57BYGH804G | 4 | 7.5 | 1.5 | 9.6 | 4.5 | 18 | 520 | 1.3 | 82 | 8 |
| 57BHH82-250B | 57BYGH402 | 4 | 5.5 | 2.5 | 3.8 | 2.2 | 18 | 520 | 1.1 | 82 | 6 |
| 57BHH82-300A | 57BYGH408 | 2 | 4.2 | 3 | 4 | 1.4 | 21 | 520 | 1.5 | 82 | 4 |
| 57BHH82-300C | 57BYGH405 | 4 | 3.6 | 3 | 2.4 | 1.2 | 21 | 520 | 1.3 | 82 | 8 |
| 57BHH82-400A | 57BYGH410 | 2 | 2 | 4 | 2 | 0.5 | 19.5 | 520 | 1.5 | 82 | 4 |
| 57BHH82-450A | 57BYGH411-16 | 2 | 2.4 | 4.5 | 1.2 | 0.5 | 19.5 | 520 | 1.1 | 82 | 4 |
| 57BHH82-450B | 57BYGH417-08 | 4 | 3.2 | 4.5 | 1.2 | 0.7 | 18 | 520 | 1.1 | 82 | 6 |
| 57BHH93-150C | 57BYGH501 | 4 | 7.2 | 1.5 | 10 | 4.8 | 16 | 670 | 1.6 | 93 | 8 |
| 57BHH93-300A | 57BYGH501B | 2 | 7.2 | 3 | 10 | 2.4 | 32 | 670 | 1.6 | 93 | 4 |
| 57BHH93-300B | 57BYGH504A-01 | 4 | 4.5 | 3 | 2.6 | 1.5 | 25 | 670 | 1.8 | 93 | 6 |
| 57BHH93-350C | 57BYGH502 | 4 | 2.8 | 3.5 | 1.8 | 0.8 | 16 | 670 | 1.8 | 93 | 8 |
| 57BHH93-400A | 57BYGH504-02 | 2 | 3.2 | 4 | 2.5 | 0.8 | 25 | 670 | 1.8 | 93 | 4 |
| 57BHH110-150C | 57BYGH601-08 | 4 | 9.3 | 1.5 | 14 | 6.2 | 26 | 800 | 1.8 | 110 | 8 |
| 57BHH110-350A | 57BYGH603B-08 | 2 | 9.5 | 3.5 | 3 | 0.7 | 26 | 800 | 1.8 | 110 | 4 |
| 57BHH110-360A | 57BYGH631 | 2 | 3.6 | 4 | 4 | 0.9 | 30 | 800 | 1.65 | 110 | 4 |
| 57BHH110-400B | 57BYGH609 | 4 | 4 | 4 | 2.4 | 1 | 24 | 800 | 1.8 | 110 | 6 |

外形图(Dimension):



注: L1及L2可根据客户要求定制

接线图(Wiring Diagram):

