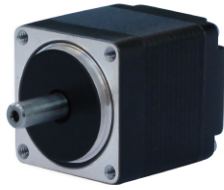


# 28BH 步进电机

NAME 11BH ( inch ) Series two-phase (four-phase )  
stepper motor

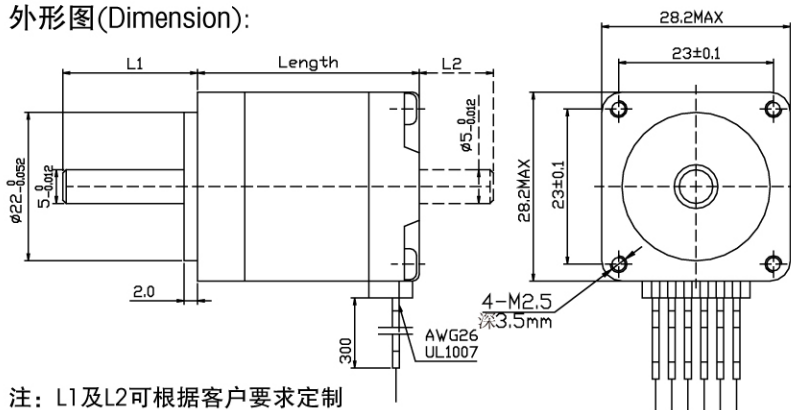


28BH系列步进电机参数列表 NAME 11BH(inch)series step-motor parameter list

项 Item	步距角 Step Angle	步距角精度 Step Angle Accuracy	电阻精度 Resistance Accuracy	电感精度 Inductance Accuracy	温升 Temperature Rise	环境温度 Ambient Temperature	绝缘电阻 Insulation Resistance	介质强度 Dielectric Strength	径向跳动 Shaft Radial Play	轴向间隙 Shaft Axial Play
规范 pecifications	1.8°	±5%	±10%	±20%	80 C Max.	-20 C~+50 C	100MΩ Min., 500VDC	500VAC for one minute	0.02Max. (450 g-load)	0.08Max. (450 g-load)

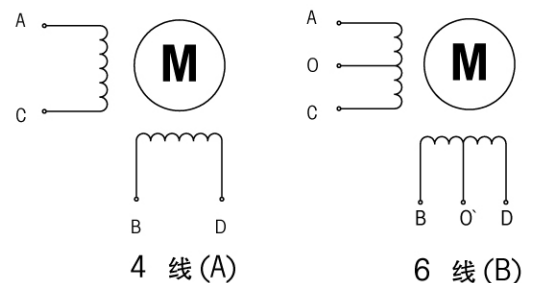
新型号 New Model	老型号 Old Model	相数 No. of Phase	电压 Voltage	电流 Current	电感 Inductance	电阻 Rasistance	最大静转矩 Holding Troque	转动惯量 Rotor Inertia	重量 Weight	机身长度 Length	接线 Lead Wire Number
			V	A	mh±20%	Ω±10%	kg.cm	g.cm <sup>2</sup>	kg	mm	NO.
28BH28-080A	28BYG401-01	2	2	0.8	1.6	2.5	0.45	8	0.095	28	4
28BH32-025A	28BYG202	2	12	0.25	14	25	0.4	9	0.1	32	4
28BH32-040B	28BYG205-01	4	12	0.4	9	26	0.55	9	0.1	32	6
28BH32-067A	28BYG203-01	2	12	0.67	4	5.6	0.61	9	0.1	32	4
28BH32-095B	28BYG201	4	4.18	0.95	1.5	4.4	0.55	9	0.1	32	6
28BH45-050A	28BYG102C-05	2	3.4	0.5	4.8	6.8	0.75	12	0.14	45	4
28BH45-067A	28BYG101-01	2	12	0.67	4.9	6.8	0.95	12	0.14	45	4
28BH45-070A	28BYG105-51	2	4.9	0.7	3	3.4	1.3	12	0.14	45	4
28BH45-095B	28BYG102-03	4	3.23	0.95	1.2	3.4	0.75	12	0.14	45	6
28BH45-140B	28BYG104-03	4	1.4	1.4	0.55	1	0.8	12	0.14	45	6
28BH51-067A	28BYG302C	2	4.4	0.67	7.2	9.2	1.2	18	0.2	51	4
28BH51-080A	28BYG301	2	4	0.8	3.3	4.9	1	18	0.18	51	4
28BH51-095B	28BYG302	4	4.4	0.95	1.8	4.6	0.9	18	0.18	51	6
28BH51-100A	28BYG302B-05	2	2.3	1	1.8	2.3	0.9	18	0.18	51	4

外形图(Dimension):



注: L1及L2可根据客户要求定制

接线图(Wiring Diagram):



4 线(A)

6 线(B)