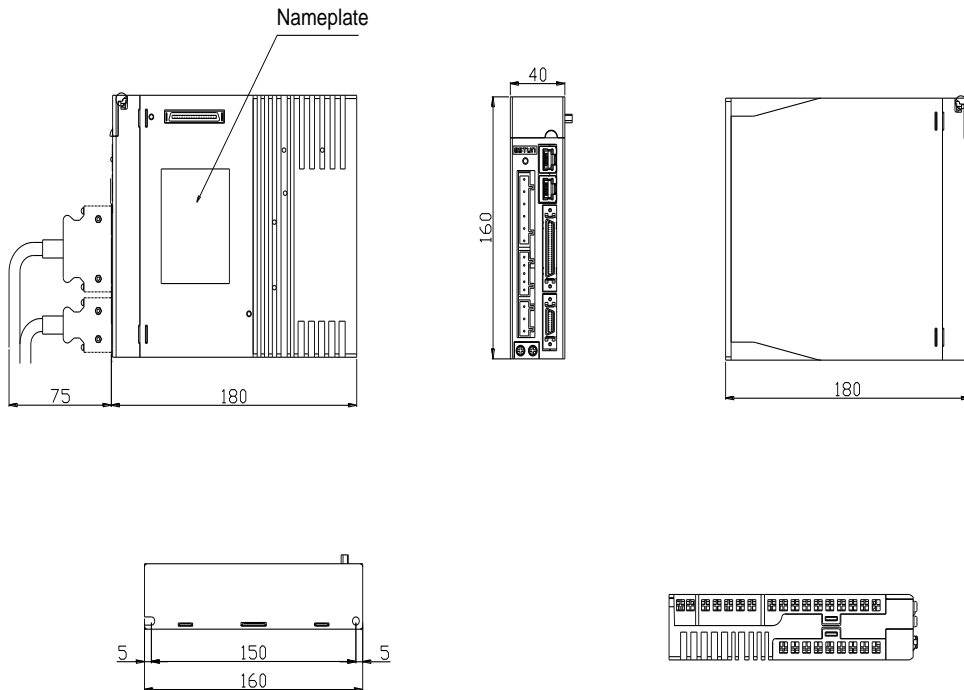


ProNet

Servo Drives External Dimensions

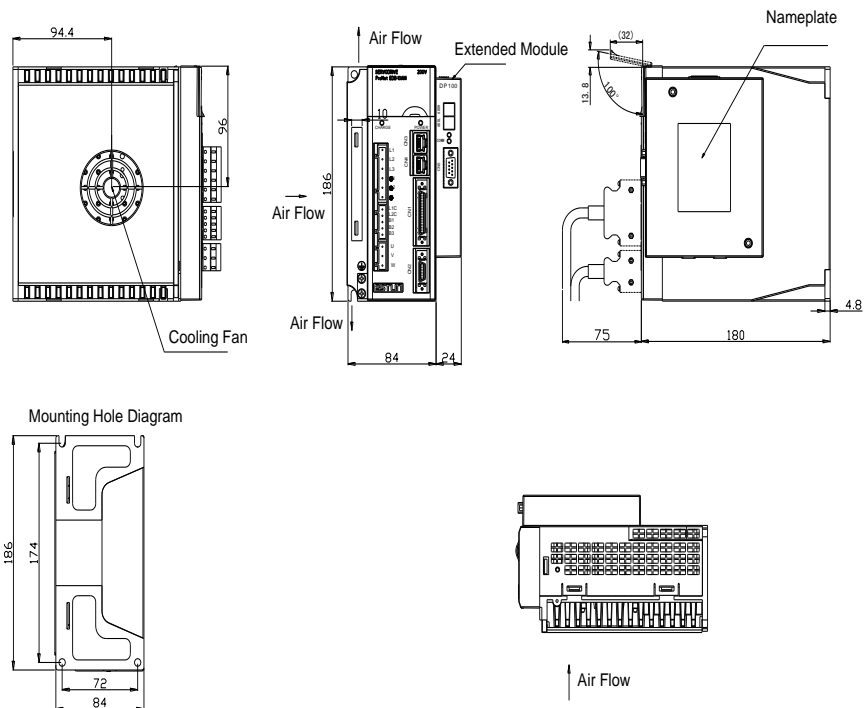
ProNet-02A/02B/04A/ ProNet-E-02A/02B/04A

Unit: mm



ProNet-04B/08A/10A/ ProNet-E-04B/08A/10A

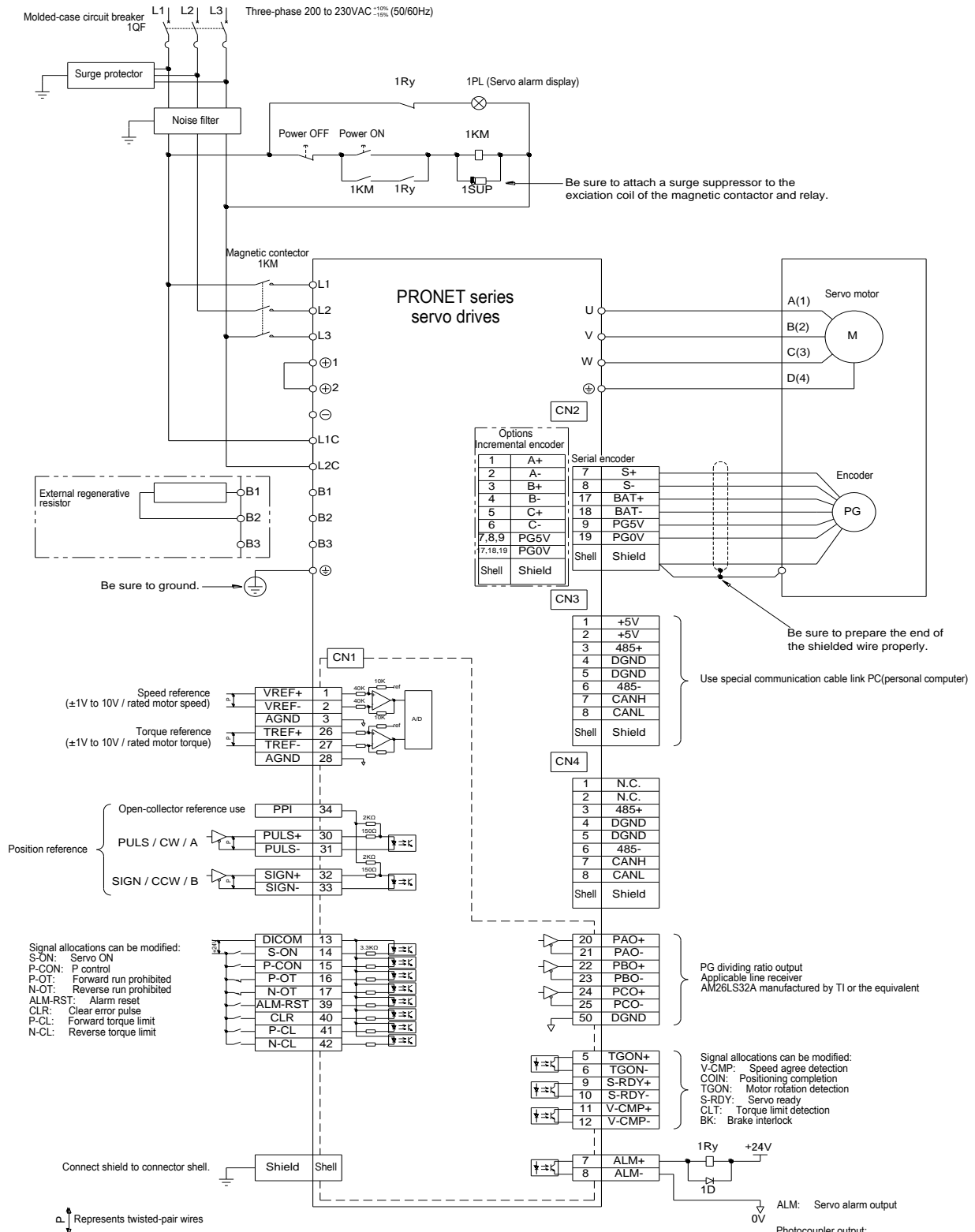
Unit: mm



ProNet

Typical Connection Example

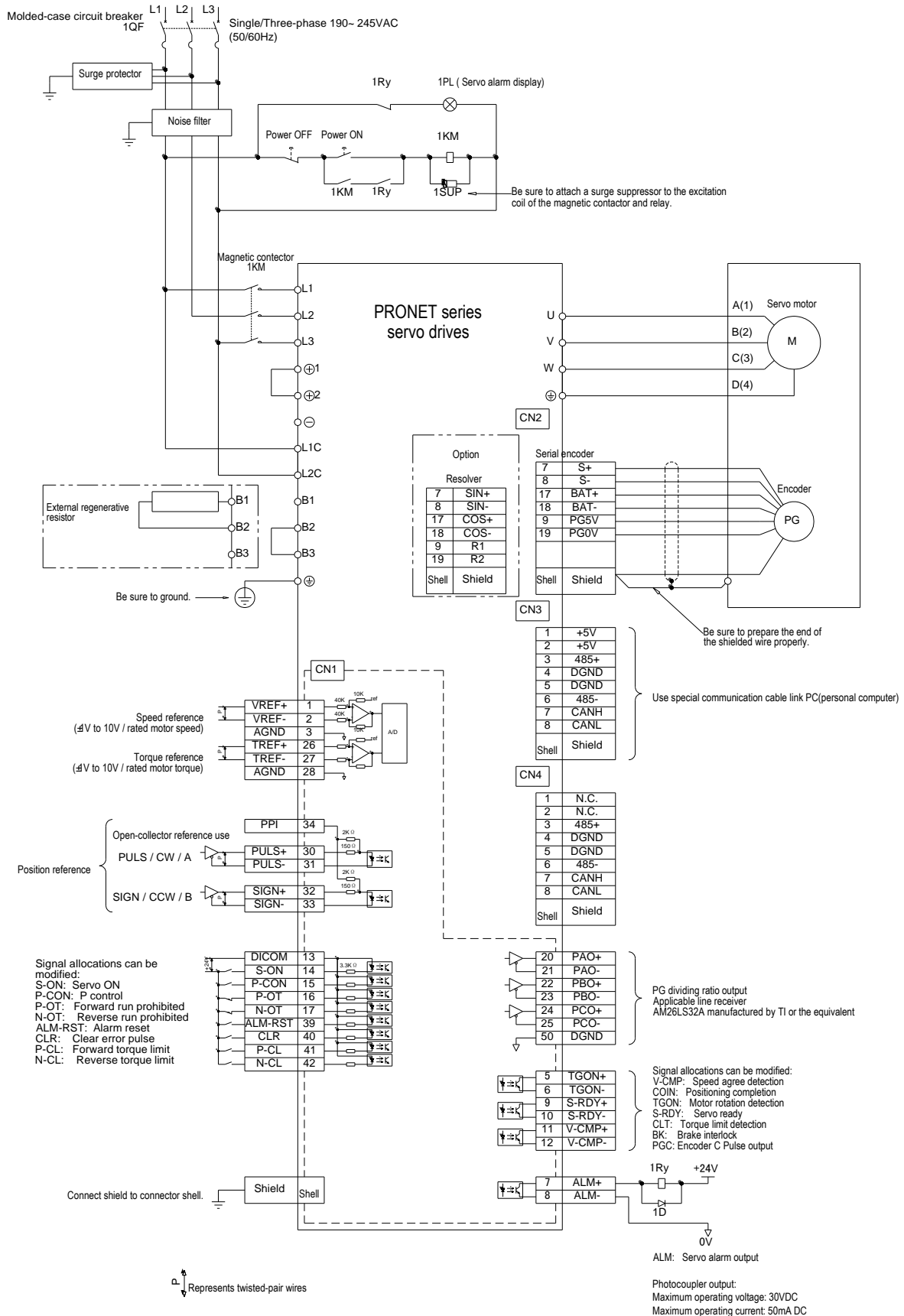
Three-phase 200VAC (ProNet-02A to 04A)



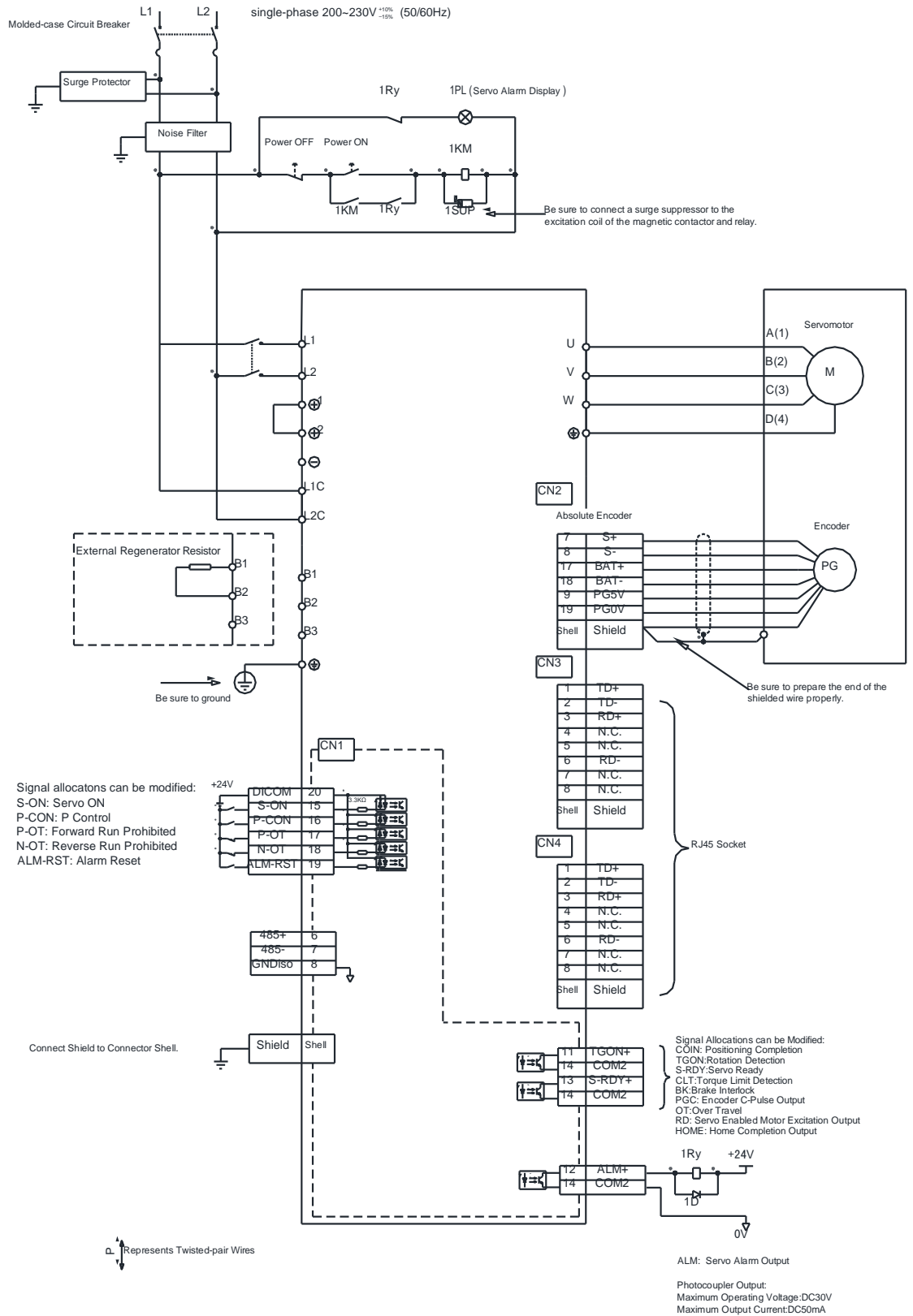
Note:

- The L1,L2,L3 and L1c,L2c terminals wiring method of ProNet 02/04 servo drives is different from other ProNet series servo drives. Please note the specific terminal definition while wiring.
- External regenerative resistor for ProNet-02/04 is provide by customer,the model of ASQ60W50? KGO resistor is recommended.
- ProNet-02/04 servo drives are also available for single phase connection.
- Change Pn521 from "1" to "0",when using the external regenerative resistor in ProNet-02/04 servo drives.

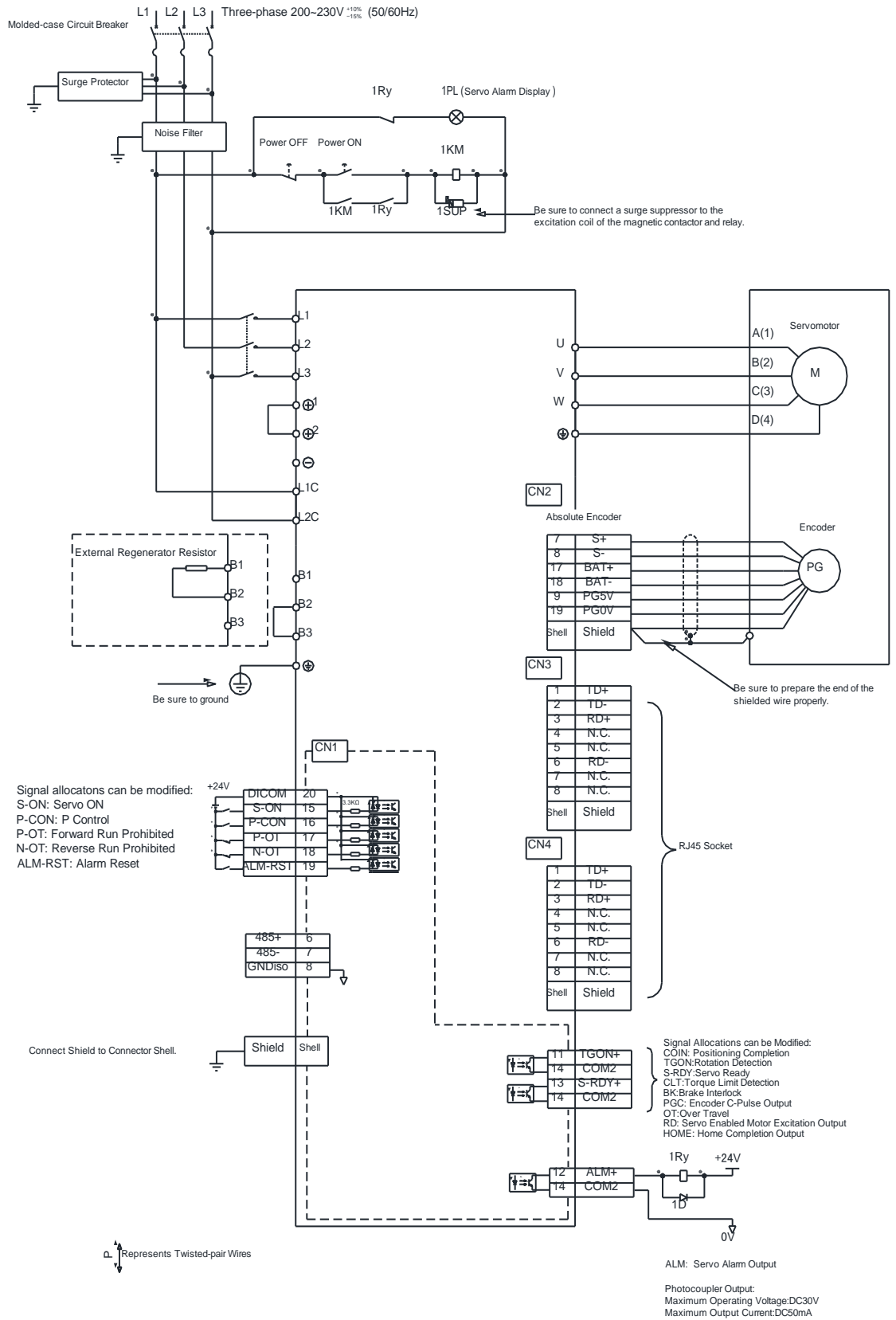
Three-phase 200VAC (ProNet-08A to 50A)



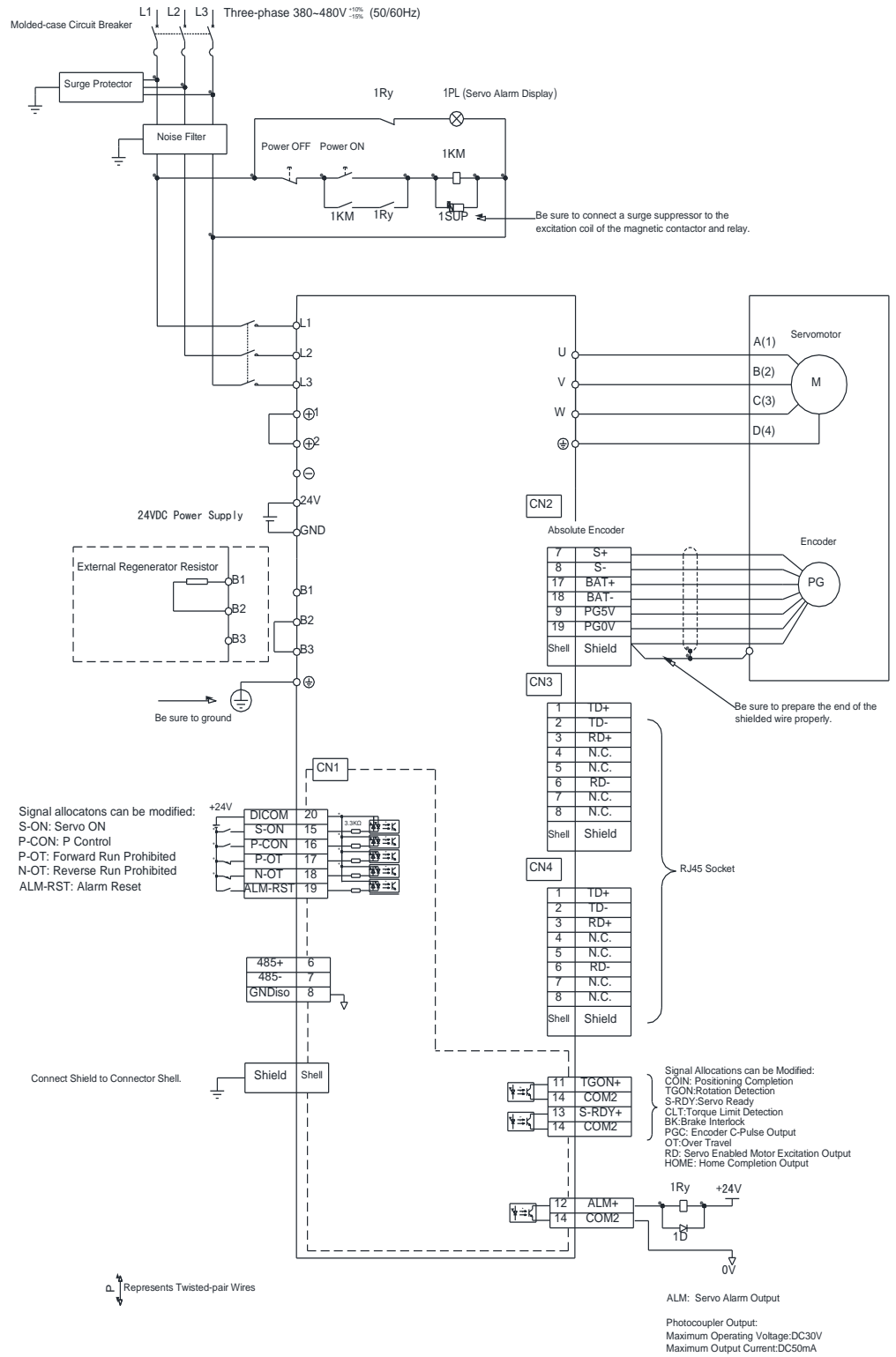
Single-phase 200VAC (ProNet-02AEA-EC to ProNet-04AEA-EC)



Three-phase 200VAC(ProNet-08AEA-EC to ProNet-50AEA-EC)



Three-phase 400VAC(ProNet-10DEA-EC to ProNet-75DEA-EC)



Three-phase 400VAC(ProNet-1ADEA-EC to ProNet-1EDEA-EC)

