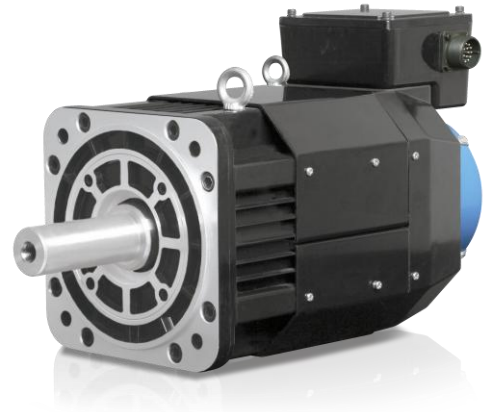


EMB

Series Servo Motor

Features

- Power supply voltage: 400V
- Used to drive the feed shaft of various machines
- Various Options (7.5kW~15kW power rating, optional brake, etc.)
- Equipped with a Resolver encoder or a 17-bit incremental/ absolute encoder
- IP44 Protection Level



Applications

- Machine tools
- Handling machine
- Food processing machine
- Textile machine

Model Specification Description

EMB- 1E D S A 1 1

EML Model Servo Motor

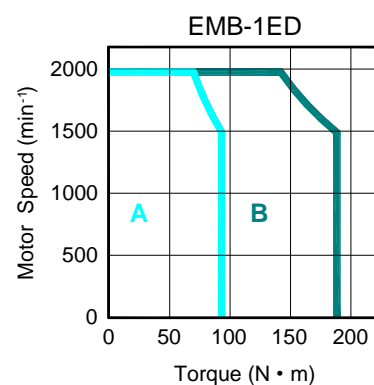
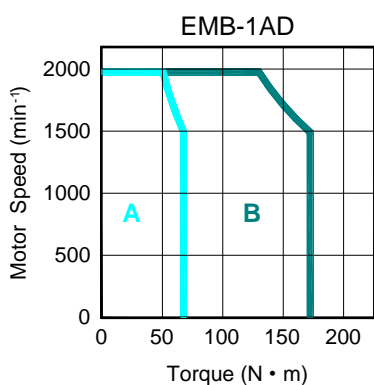
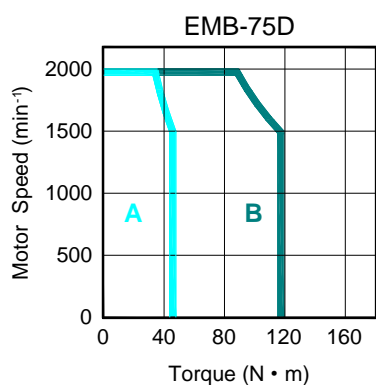
Rated Power		Power Voltage		Encoder		Design Sequence		Shaft End		Optional Parts	
Sign	Spec.	Sign	Spec.	Sign	Spec.	Sign	Spec.	Sign	Spec.	Sign	Spec.
75	7.5KW	D	400VAC	S	Absolute Encoder: 131072P/R	A	Design Sequence	1	Flat, without keys	1	None
1A	11KW								2		With Oil Seal
1E	15KW							2	Flat, with keys, with screw thread	3	With brake (DC24V)
		4	With oil seal, with brake (DC24V)								

Rated Value and Specification

voltage		400VAC		
Servo motor Model	EMB-	75D□A	1AD□A	1ED□A
Rated output power	kW	7.5	11.0	15.0
Rated torque	Nm	47.8	70.0	95.5
Instantaneous Peak Torque	Nm	143.4	175	191
Rated Current	Arms	18.0	28.0	38.0
Instantaneous Max. Current	Arms	56.0	70.0	84.0
Rated Speed	min ⁻¹	1500		
Max. Speed	min ⁻¹	2000		
Rotor Moment of Inertia	x10 ⁻⁴ kgm ²	186.2(193.6)	217.6(278.9)	338.8(346.1)
Brake voltage		DC24V ± 10%		
Brake power	W	90		
Brake holding torque	N.M	100		
Feedback unit	standard	Resolver		
	option	17-bit absolute encoder:131072P/R		
Insulation Class		F		
Ambient Temperature		0 to +40°C (non freezing)		
Ambient Humidity		20 to 80% RH (non condensing)		
Enclosure		Fully enclosed, Self-Cooled, IP65 Protection Rating (Except output shaft and connector)		
Vibration		24.5m/s ²		

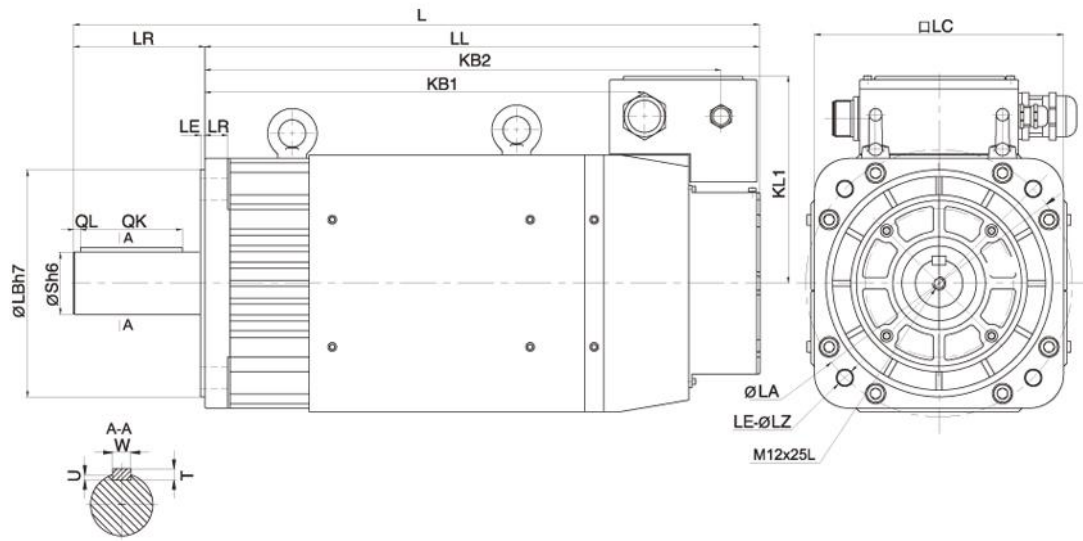
Note: The value in parentheses is for servo motors with holding brakes.

Torque-Speed Feature



A: Continuous Working Area B: Repeatability Working Area

Dimensions



Model EMB-	L	LL	KB1	KB2	KL1	Flange side							S	Tap x Depth	key				
						LR	LE	LF	LC	LA	LB	LZ			QK	QL	W	T	U
75D	530	414	366	302	184	116	4	18	220	235	200	13.5	42	M16x32L	90	6	12	8	5
1AD	580	464	416	352	184	116	4	18	220	235	200	13.5	42	M16x32L	90	6	12	8	5
1ED	615	499	451	387	184	116	4	18	220	235	200	13.5	55	M20x40L	90	6	12	10	6



➤ Brake Connector Specifications

- Plug: MS3106A10SL-3S
- Receptacle: MS3102A10SL-3P
- Cable Clamp: MS3057-4A

Pin No.	Signal
A	B1
B	B2
C	-



➤ Encoder Connector Specifications

- Plug: MS3108B20-29S
- Receptacle: MS3102A20-29P
- Cable Clamp: MS3057-12A

Incremental/Absolute encoder

Pin No.	Signal	Color
K	S+	Blue
L	S-	Blue/Black
T	BAT+	Brown
S	B AT-	Brown/Black
H	PG5V	Red
G	PG0V	Black
J	FG	Shield

Resolver

Pin No.	Signal	Color
K	SIN+	Yellow
L	SIN-	Blue
T	COS+	Red
S	COS-	Black
H	R1	Red/White
G	R2	Yellow/White
J	FG	Shield

Optional spare part

Control cables are available in addition to a 50-pin converter, allowing for easier testing.



Control Cable



Converter

	Item No.	Length	Pin	Connector	Wire
Control Cable	NC-50-01	1m	50	3M	Twisted-pair
	NC-50-02	2m			
	NC-50-03	3m			
	NC-50-05	5m			
Converter	CV-50	1.5m	50	3M	Twisted-pair

Selecting Peripheral Devices

Servo Drive (ProNet)	Servo Drive (ProNet-E)	Main Circuit Voltage	Specification for Internal Regenerative Resistor	Min. Allowable Resistance	Min. Rated Input Current for Three-phase Filters	Min. Rated Current for Circuit Breaker
ProNet-02A	ProNet-E-02A	200-230VAC	50Ω/60w External Connection	25Ω	—	10A
ProNet-04A	ProNet-E-04A	200-230VAC	50Ω/60w External Connection	25Ω	—	10A
ProNet-08A	ProNet-E-08A	200-230VAC	50Ω/60w	25Ω	—	25A
ProNet-10A	ProNet-E-10A	200-230VAC	50Ω/60w	25Ω	—	25A
ProNet-15A	ProNet-E-15A	200-230VAC	60Ω/80w	25Ω	—	35A
ProNet-20A	ProNet-E-20A	200-230VAC	60Ω/80w	25Ω	—	55A
ProNet-30A	ProNet-E-30A	200-230VAC	10Ω/300w	10Ω	27A	70A
ProNet-50A	ProNet-E-50A	200-230VAC	10Ω/300w	10Ω	42A	100A
ProNet-10D	ProNet-E-10D	380-480VAC	200Ω/80w	50Ω	—	12A
ProNet-15D	ProNet-E-15D	380-480VAC	200Ω/80w	50Ω	—	20A
ProNet-20D	ProNet-E-20D	380-480VAC	200Ω/80w	40Ω	—	24A
ProNet-30D	ProNet-E-30D	380-480VAC	40Ω/300w	35Ω	14A	33A
ProNet-50D	ProNet-E-50D	380-480VAC	40Ω/300w	20Ω	23A	55A
ProNet-75D		380-480VAC	40Ω/300w	20Ω	27A	60A
ProNet-1AD		380-440VAC	20Ω/1.5kw External Connection	17Ω	42A	80A
ProNet-1ED		380-440VAC	15Ω/1.5kw External Connection	12Ω	57A	120A

400V Control Circuit Power Supply (+24VDC)



Servo Drive	Switching Power
ProNet-10D	NES-35-24(35W)
ProNet-15D	NES-35-24(35W)
ProNet-20D	NES-35-24(35W)
ProNet-30D	NES-50-24(50W)
ProNet-50D	NES-50-24(50W)
ProNet-75D	NES-50-24(50W)

Note: For more information about the SMPS, please refer to the Mean Well manual.