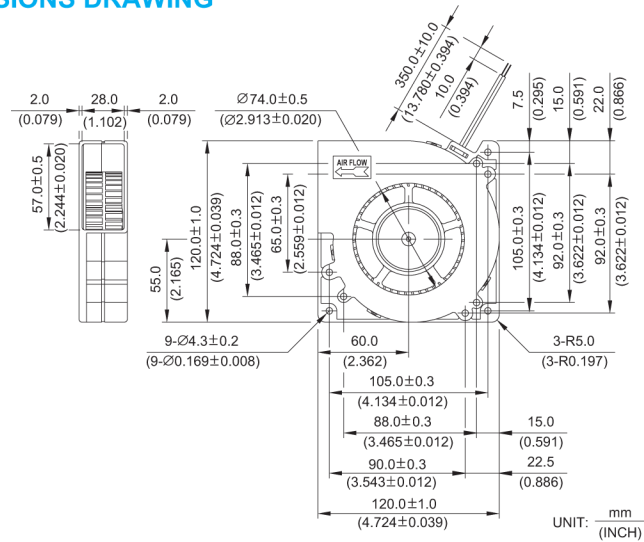
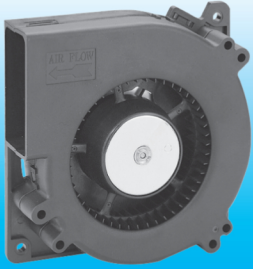
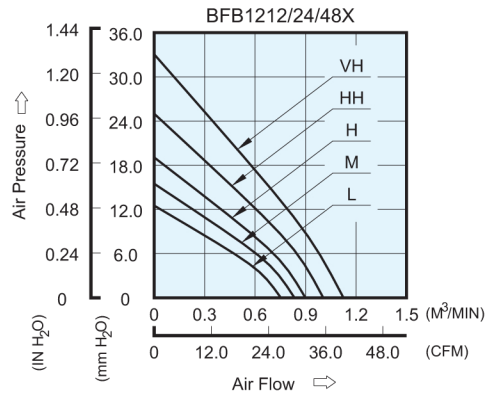


# BFB 120 x 120 x 32 MM SERIES

## DIMENSIONS DRAWING



## P & Q CURVE (AT RATED VOLTAGE)



- \* Bearing Type  
Ball Bearings
- \* Material  
Impeller & Frame : Plastic (UL 94V-0)
- \* Lead Wires :  
UL 1007 AWG #24 OR Equivalent  
Red Wire Positive (+)  
Black Wire Negative (-)
- \* Weight : 230g (8.11 oz)

| MODEL     |             | Rated Voltage | Operating Voltage Range | Input Current | Input Power | Speed  | Maximum Air Flow    |       | Maximum Air Pressure |                     | Noise |
|-----------|-------------|---------------|-------------------------|---------------|-------------|--------|---------------------|-------|----------------------|---------------------|-------|
| PART NO.  | FUNCTION    | VDC           | VDC                     | Amp           | Watt        | R.P.M. | m <sup>3</sup> /min | CFM   | mmH <sub>2</sub> O   | IN H <sub>2</sub> O | dB-A  |
| BFB1248L  | -R00 / -F00 | 48            | 28.0 to 56.0            | 0.09          | 4.32        | 2100   | 0.750               | 26.49 | 12.50                | 0.492               | 47.0  |
| BFB1248M  | -R00 / -F00 | 48            | 28.0 to 56.0            | 0.12          | 5.76        | 2300   | 0.830               | 29.31 | 15.50                | 0.610               | 48.5  |
| BFB1248H  | -R00 / -F00 | 48            | 28.0 to 56.0            | 0.15          | 7.20        | 2500   | 0.890               | 31.43 | 19.00                | 0.748               | 51.0  |
| BFB1224HH | -R00 / -F00 | 24            | 7.0 to 27.6             | 0.54          | 12.96       | 2800   | 1.000               | 35.31 | 25.00                | 0.984               | 54.0  |
| BFB1248HH | -R00 / -F00 | 48            | 28.0 to 56.0            | 0.22          | 10.56       |        |                     |       |                      |                     |       |
| BFB1212VH | -R00 / -F00 | 12            | 4.0 to 13.8             | 1.25          | 15.00       | 3100   | 1.120               | 39.55 | 33.00                | 1.299               | 56.5  |
| BFB1224VH | -R00 / -F00 | 24            | 7.0 to 27.6             | 0.60          | 14.40       |        |                     |       |                      |                     |       |

\* Function type is optional.  
 \* The max. air flow and the speed are measured in free air ; max. air pressure is measured at zero air flow.  
 \* Noise is measured in anechoic chamber in free air, one meter from intake side.  
 \* All readings are typical values at rated voltage.  
 \* Specifications are subject to change without notice.