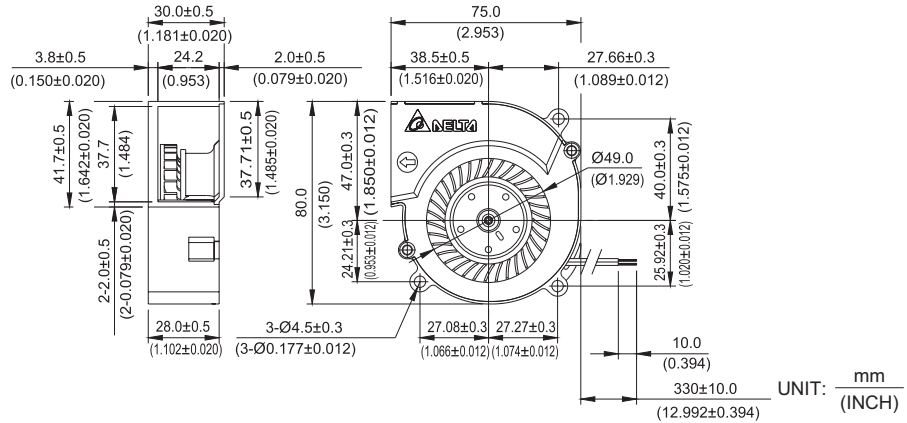
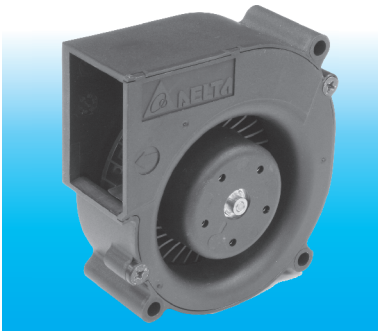


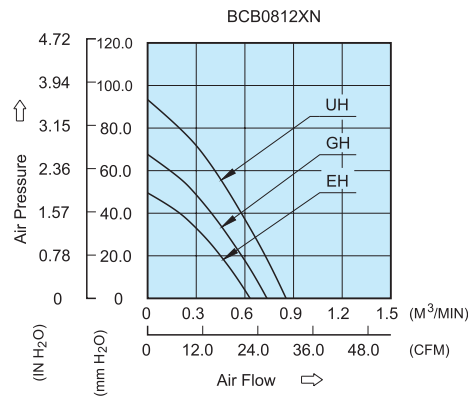
# BCB 75 x 80 x 30 MM SERIES

## DIMENSIONS DRAWING



- \* Bearing Type  
Ball Bearings
- \* Material
- \* Impeller & Frame: Plastic (UL94V-0)
- \* Lead Wires :  
UL 1007 AWG #24 OR Equivalent  
Red Wire Positive (+)  
Black Wire Negative (-)
- \* Weight : 140g (4.94 oz)

## P & Q CURVE (AT RATED VOLTAGE)



MODEL		Rated Voltage	Operating Voltage Range	Input Current	Input Power	Speed	Maximum Air Flow		Maximum Air Pressure		Noise
PART NO.	FUNCTION	VDC	VDC	Amp	Watt	R.P.M.	m <sup>3</sup> /min	CFM	mmH <sub>2</sub> O	IN H <sub>2</sub> O	dB-A
BCB0812EHN	-R00 / -F00	12	6.0 to 13.2	1.00	12.00	8200	0.632	22.32	49.54	1.950	64.0
BCB0812GHN	-R00 / -F00	12	6.0 to 13.2	1.45	17.40	9500	0.736	25.99	67.64	2.663	67.8
BCB0812UHN	-R00 / -F00	12	6.0 to 13.2	2.30	27.60	10800	0.854	30.16	93.35	3.675	69.3

\* Function type is optional.  
 \* The max. air flow and the speed are measured in free air ; max. air pressure is measured at zero air flow.  
 \* Noise is measured in anechoic chamber in free air, one meter from intake side.  
 \* All readings are typical values at rated voltage.  
 \* Specifications are subject to change without notice.