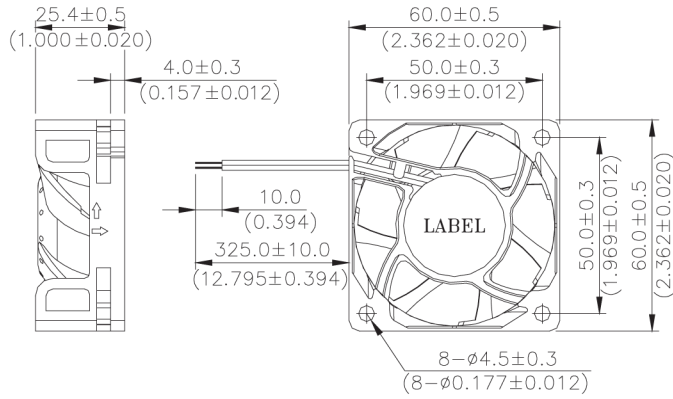


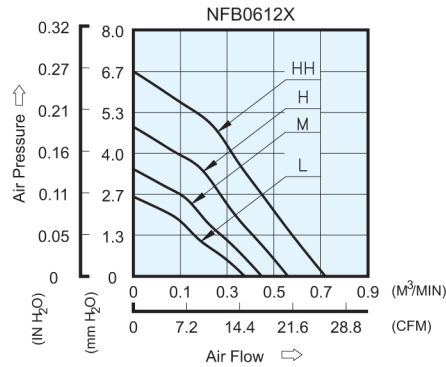
# NFB 60 x 60 x 25.4 MM SERIES

## DIMENSIONS DRAWING



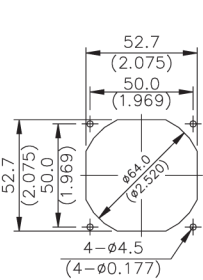
UNIT:  $\frac{\text{mm}}{\text{(INCH)}}$

## P & Q CURVE (AT RATED VOLTAGE)

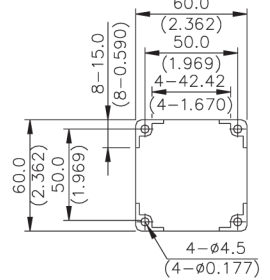


## MOUNTING PANEL CUTOUT

OUTLET SIDE



INLET SIDE



UNIT:  $\frac{\text{mm}}{\text{(INCH)}}$

- \* Bearing Type  
Ball Bearings
- \* Material  
Impeller & Frame : Plastic (UL 94V-0)
- \* Lead Wires :  
UL 1007 AWG #24 OR Equivalent  
Red Wire Positive (+)  
Black Wire Negative (-)
- \* Weight : 67g (2.36 oz)

| MODEL     |             | Rated Voltage | Operating Voltage Range | Input Current | Input Power | Speed  | Maximum Air Flow    |       | Maximum Air Pressure |                     | Noise |
|-----------|-------------|---------------|-------------------------|---------------|-------------|--------|---------------------|-------|----------------------|---------------------|-------|
| PART NO.  | FUNCTION    | VDC           | VDC                     | Amp           | Watt        | R.P.M. | m <sup>3</sup> /min | CFM   | mmH <sub>2</sub> O   | IN H <sub>2</sub> O | dB-A  |
| NFB0612L  | -R00 / -F00 | 12            | 4.0 to 13.8             | 0.07          | 0.84        | 3100   | 0.427               | 15.08 | 2.58                 | 0.101               | 26.4  |
| NFB0612M  | -R00 / -F00 | 12            | 4.0 to 13.8             | 0.09          | 1.08        | 3600   | 0.493               | 17.41 | 3.48                 | 0.137               | 31.3  |
| NFB0612H  | -R00 / -F00 | 12            | 4.0 to 13.8             | 0.13          | 1.56        | 4250   | 0.594               | 20.98 | 4.89                 | 0.192               | 35.1  |
| NFB0612HH | -R00 / -F00 | 12            | 4.0 to 13.8             | 0.18          | 2.16        | 5000   | 0.705               | 24.90 | 6.66                 | 0.262               | 40.7  |

\* Function type is optional.  
 \* The max. air flow and the speed are measured in free air ; max. air pressure is measured at zero air flow.  
 \* Noise is measured in anechoic chamber in free air, one meter from intake side.  
 \* All readings are typical values at rated voltage.  
 \* Specifications are subject to change without notice.